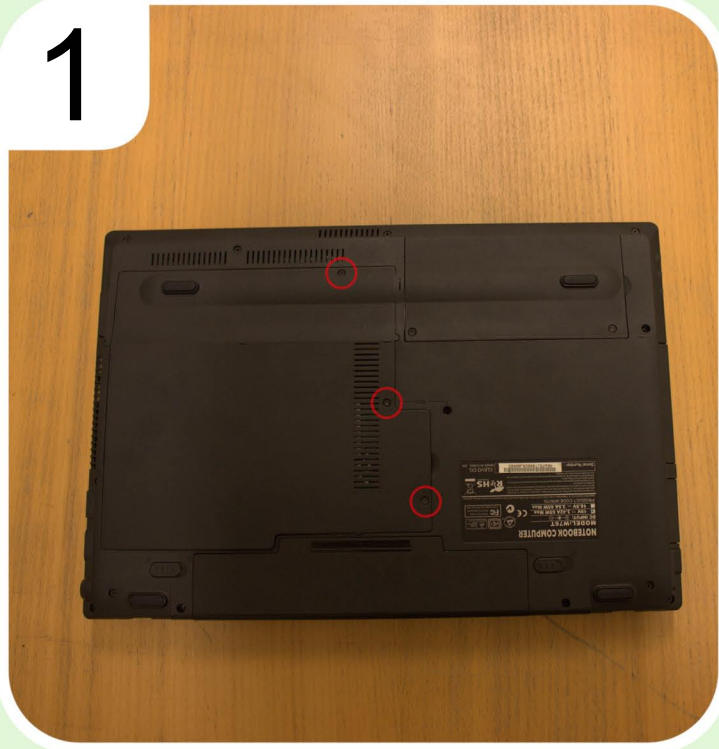




Battery removal: Notebook 210

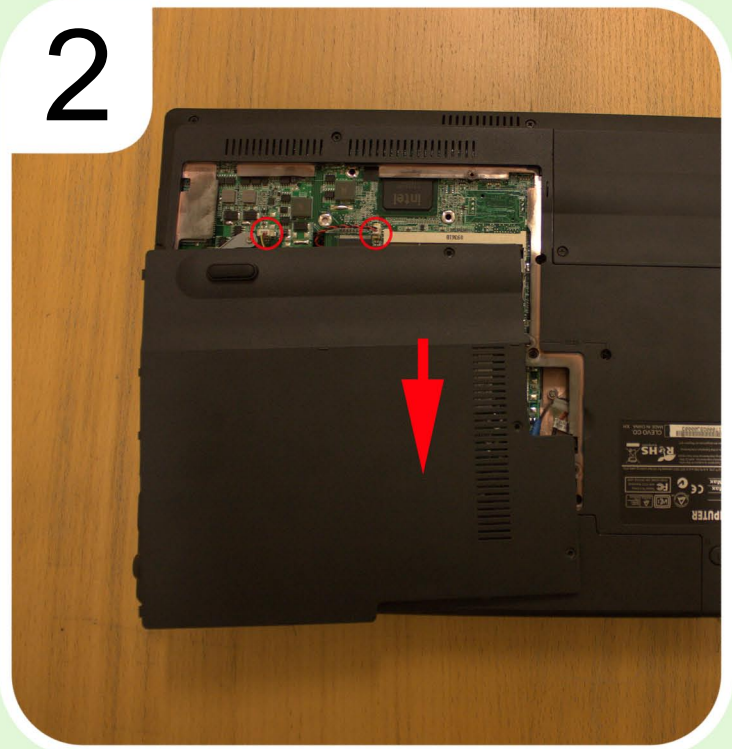
In accordance with EU legislation all batteries must be disposed of in a responsible manner.
Ensure power is off before removing the access panel

1



Undo retaining bolts

2



Remove panel and cables

3



Remove heatsink, wireless and RAM

4



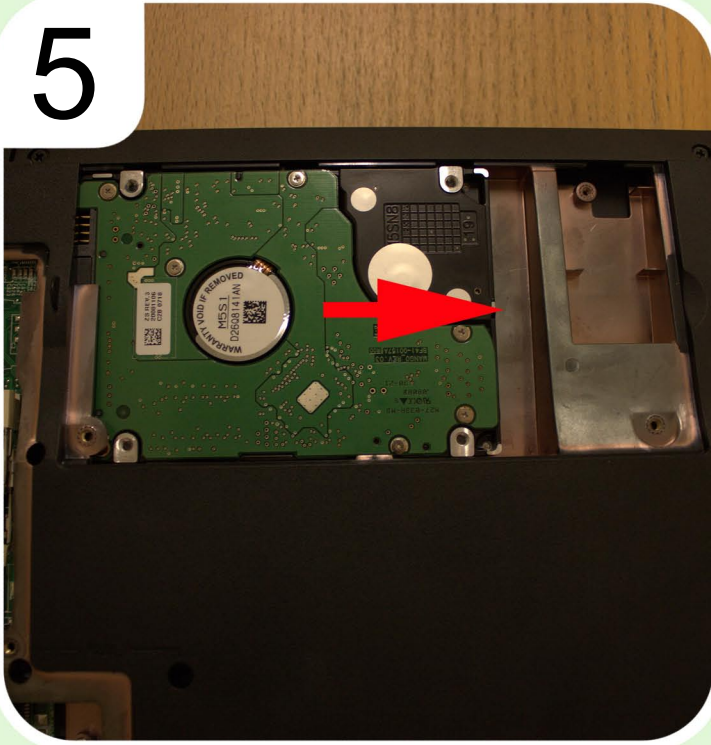
remove hard drive cover



Battery removal: Notebook 210

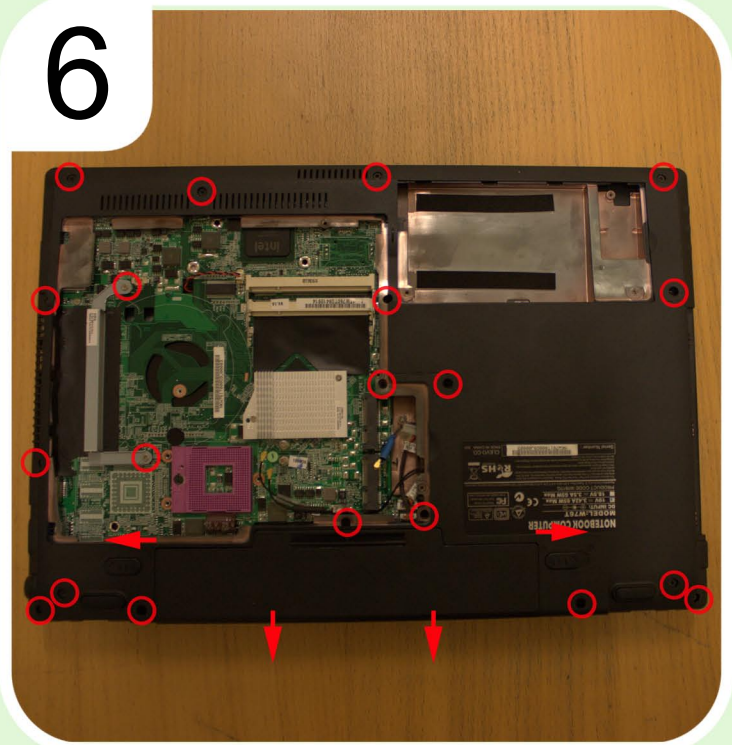
In accordance with EU legislation all batteries must be disposed of in a responsible manner. Ensure power is off before removing the access panel

5



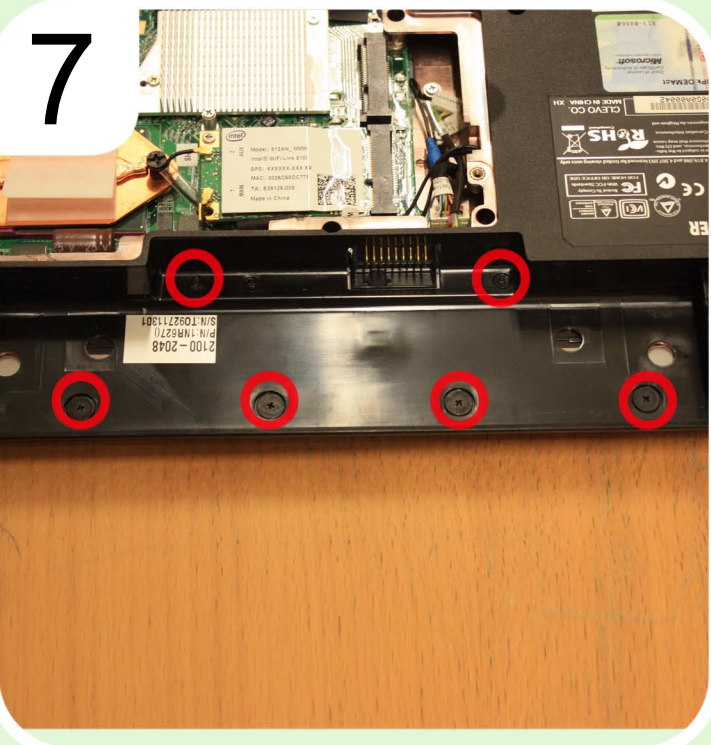
Remove hard drive

6



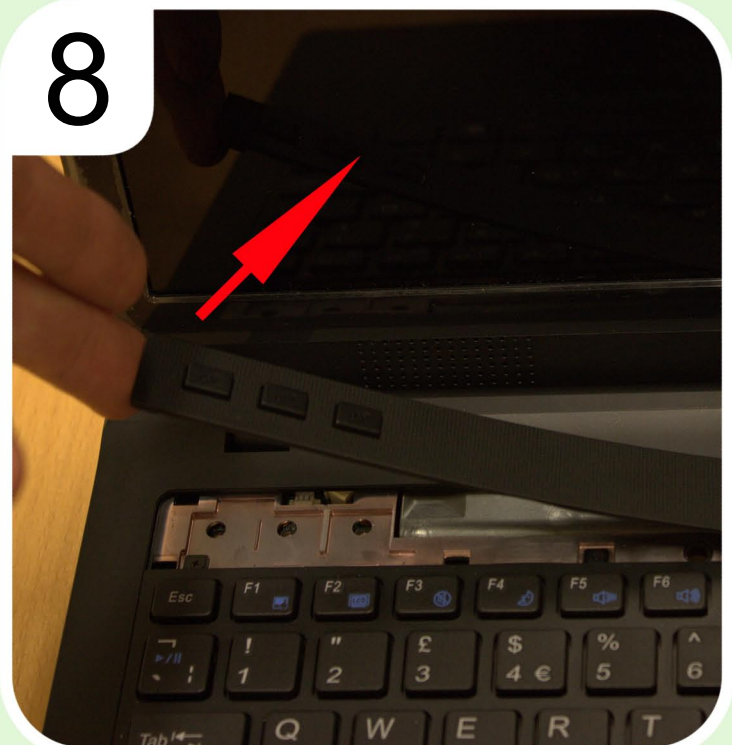
Remove screws and battery

7



Remove screws

8



Remove plastic cover

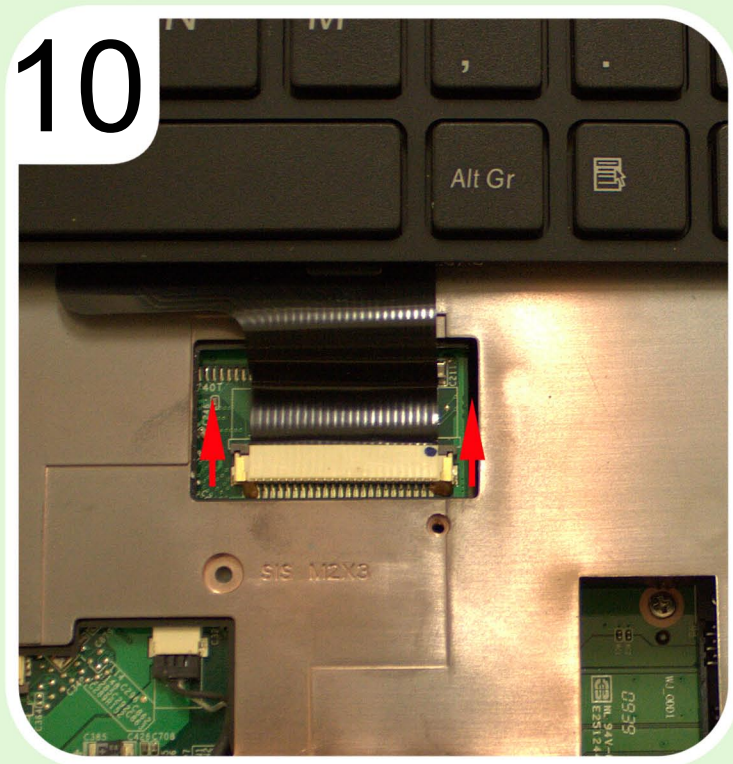


Battery removal: Notebook 210

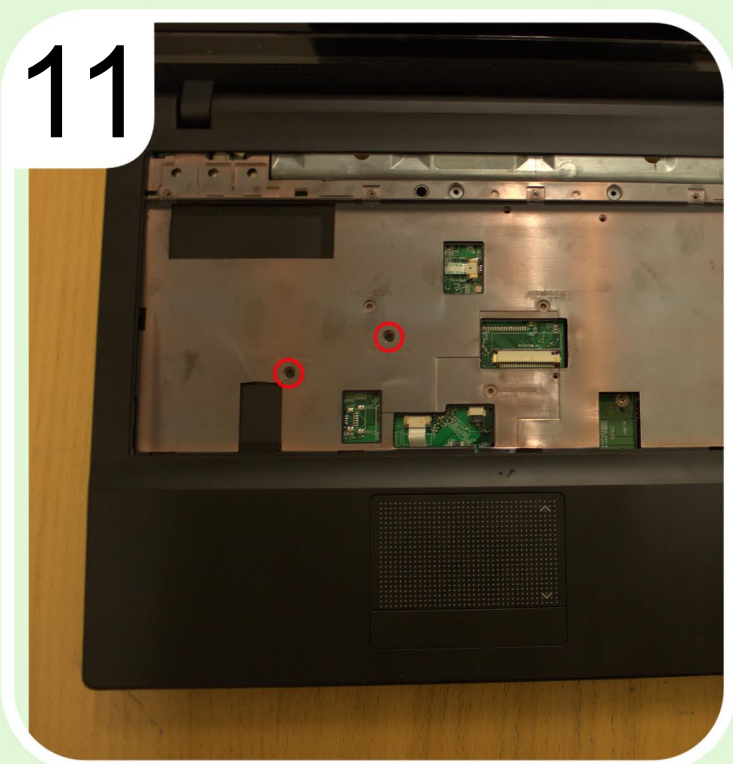
In accordance with EU legislation all batteries must be disposed of in a responsible manner.
Ensure power is off before removing the access panel



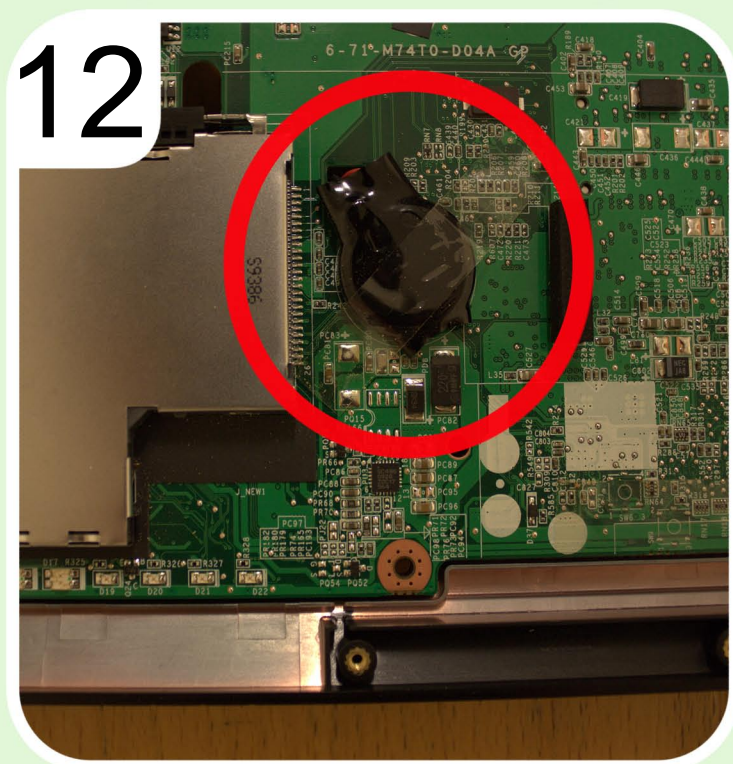
Undo retaining bolts



Remove keyboard connector



Remove bolts



Remove top plate and battery