

RM-One Version 2 Screen Disassembly and Assembly Guide

Note: Due to it's weight, all disassembly an assembly of the RM One Version 2 must be carried out with the unit stood up right on it's base.

1. Remove 2 x Security screws from Column Cap, (**Fig 1**) and remove Column Cap.

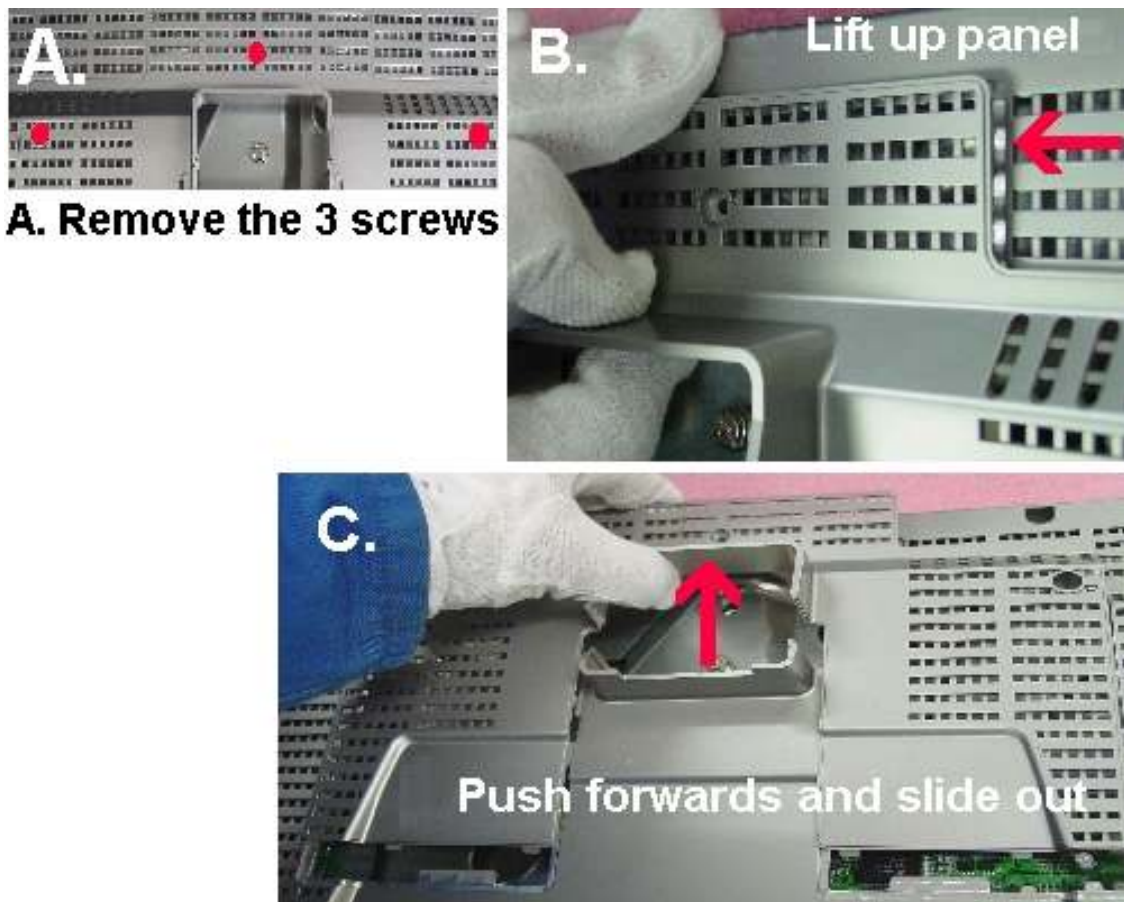
Fig 1



RM-One Version 2 Screen Disassembly and Assembly Guide

2. Remove 3 x Security screws securing the Back Panel, (**Fig 2 A**). Lift up Back Panel, (**Fig 2 B**). Push forwards and slide Back Panel out, (**Fig 2 C**).

Fig 2



RM-One Version 2 Screen Disassembly and Assembly Guide

3. Un-screw Signal Cable and disconnect from PCB, (**Fig 3**)

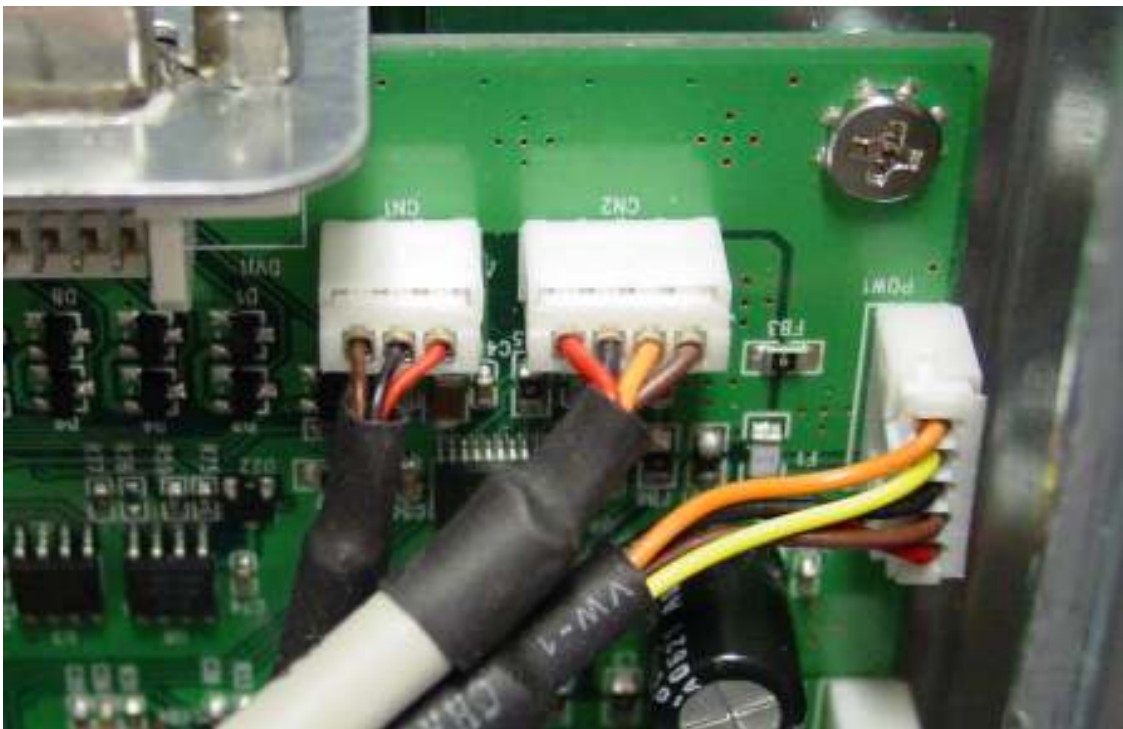
Fig 3



RM-One Version 2 Screen Disassembly and Assembly Guide

4. Disconnect 3 cables from CN1, CN2 and POW1 connectors on PCB, (**Fig 4**)

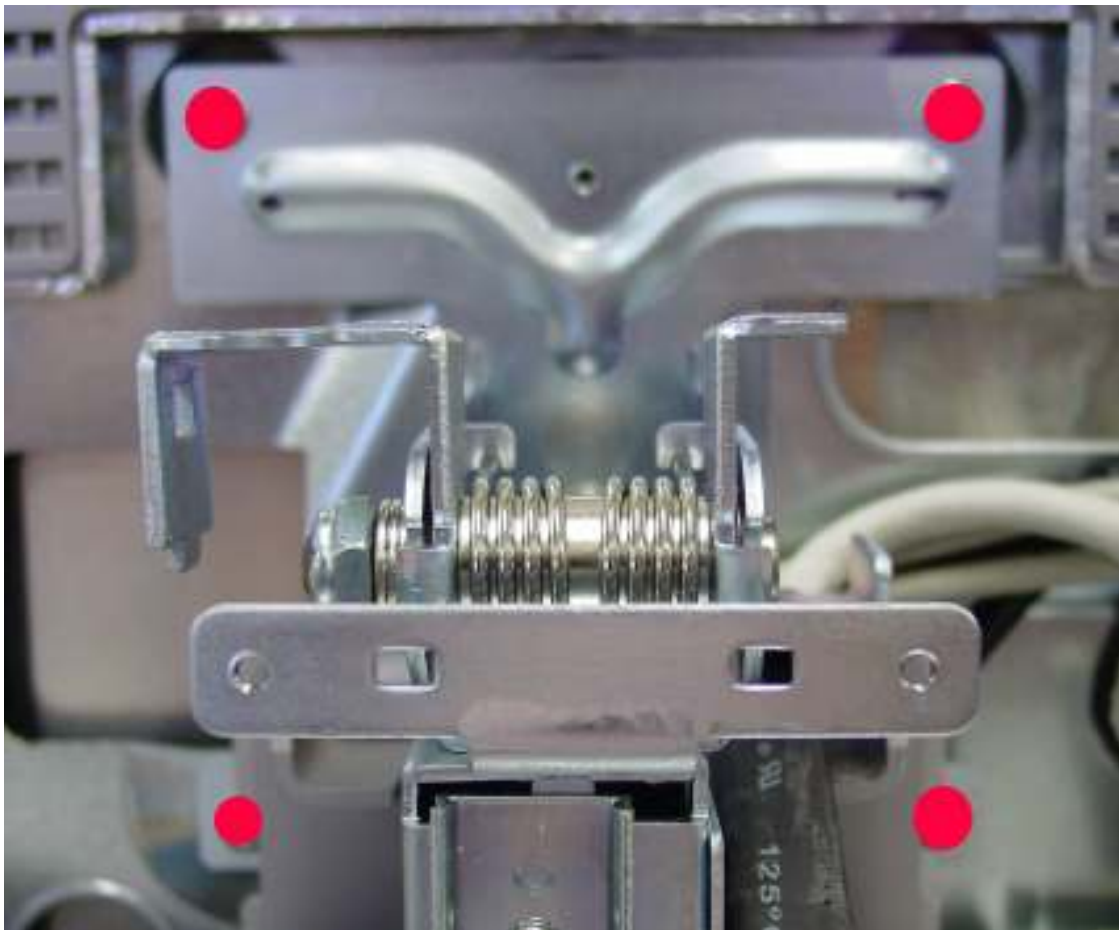
Fig 4



RM-One Version 2 Screen Disassembly and Assembly Guide

5. Remove 4 x screws securing Screen Assembly to Column Bracket, (**Fig 5**).

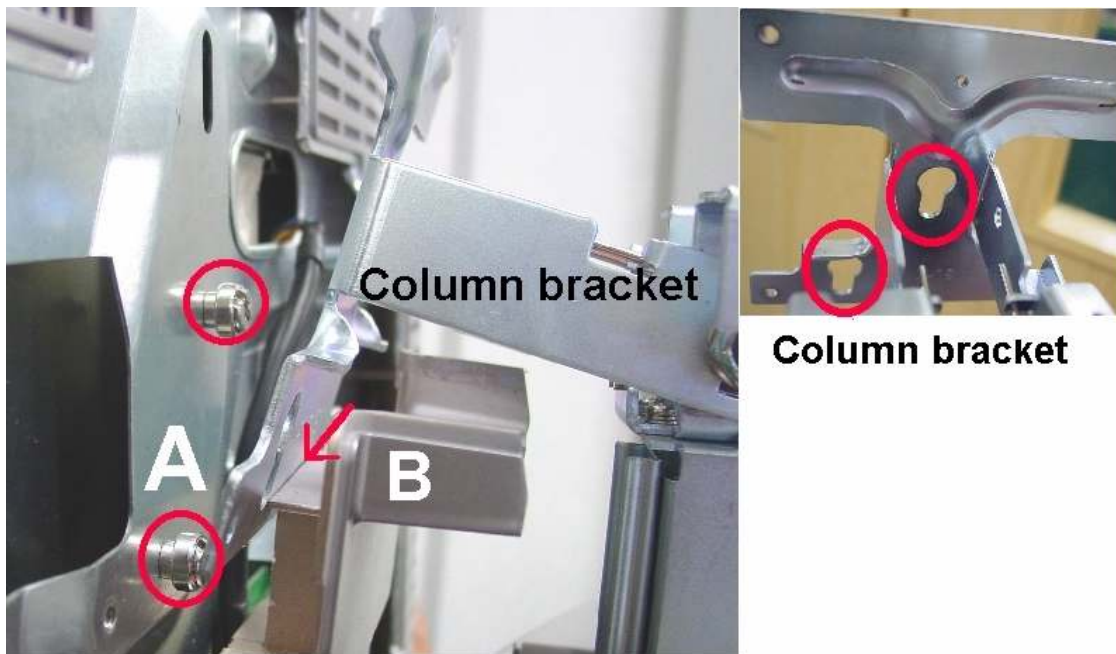
Fig 5



RM-One Version 2 Screen Disassembly and Assembly Guide

6. Lift Screen Studs (A and B) off Column Bracket Keyholes, (**Fig 6**).

Fig 6



RM-One Version 2 Screen Disassembly and Assembly Guide

7. Lift off Screen from Column Bracket, (**Fig 7**).

Fig 7



RM-One Version 2 Screen Disassembly and Assembly Guide

8. Follow this document in reverse for assembly of replacement Screen Assembly.